

# Announcing a New Service Offered by

# AR Systems, Inc.

"The Healthcare Navigator Company"



"Finding HealthCare Solutions . . . Together"

PO Box 2521 • Twin Falls, ID 83303  
(208) 423-9036

Daylee1@mindspring.com

Tax ID 82-0475793

"Leading with Energy and Excellence"  
<http://arsystemsdayegusquiza.com>

## PHYSICIAN ADVISOR TRAINING PROGRAMS — TWO UNIQUE OPTIONS!

**AR Systems, Inc.** is excited to present these dynamic programs to propel the current Physician Advisor from an unclear, self-taught role to an energized leader with enhanced understanding of the daily PA role, payer challenges, appeals, and ongoing provider education while networking with key hospital staff.

## TWO DAYS IN THE LIFE OF A PA — INDIVIDUALIZED TRAINING & SHADOWING

A Two (2) Day Onsite Training program moving from theory to practicum with an experienced PA

- Two options:** 1) **PA travels to the training Physician Advisor's hospital. Buddy-training program in a like-sized hospital with ARS and Senior PA.**  
2) **ARS and Senior PA travel to the requested site.**

*Both ARS/operations and PA Senior Trainer/PA specific issues are addressed in either option.*

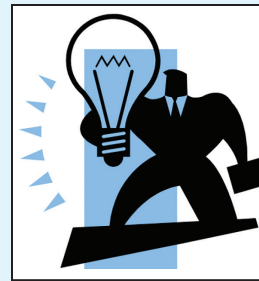
### Key elements of the training for the Buddy Program — option 1:

- Placement into a like-sized hospital
- PA buddy training — (two PAs per two-day onsite training)
- Both PA and hospital UR insight provided
- Lunch provided for networking "quiet time"
- Dutch Treat dinner with faculty to continue Day 1 discussions
- Phone support for 30 days post onsite (to be finalized)
- Hotel coordination
- Identify key 'outcome based' criteria for PA program
- Discuss additional training needs, if requested

### Recommended focus areas covered in BOTH of the two-day onsite training with two onsite trainers — UR and PA leaders:

- Kick off training on understanding inpt vs obs; non-Medicare payers challenges (PA and ARS)
- Daily rounding with UR team and PA
- Medicare calls/disputes/ QIO calls
- Attend a UR committee
- Peer to Peer – exposure with different payers/disputes
- When it doesn't go right – condition code 44
- How to handle inpt self-denials?
- Ongoing dialogue with ordering providers
- Working with UR — time to convert? Payer challenges?
- Involvement with denials – writing an appeal, participating in an ALJ hearing (if possible)
- Shadowing PA and/or UR for full two days

**At the end of the two days, the PAs will be able to continue in their learning adventure with enhanced skills, while networking with the experienced PA.**



***Moving from the weeds to the collective learning experience!***

**Pricing:** • Discount will be given for multiple PAs from the same facility or health system.  
**Save \$250 for each attendee.**

**Continuing Education:** Certificates of participation/completed training hours will be issued for the attendees to apply for CEUs independently.

***PS: Optional pre-onsite patient status audits are very helpful to incorporate into the onsite training. Ask about this exciting option too!***

***Go to our webpage for more information:***

***[www.arsystemsdayegusquiza.com](http://www.arsystemsdayegusquiza.com) — under boot camp***

## CONTACT US FOR TWO-DAY PA ONSITE TRAINING

Name: \_\_\_\_\_

Hospital/Health System/Group: \_\_\_\_\_

Address: \_\_\_\_\_

Email address (required): \_\_\_\_\_

Phone (required): \_\_\_\_\_



MEMBER, ACPA ADVISORY BOARD  
[www.ACPAadvisors.org](http://www.ACPAadvisors.org)